



Port Fairy Community House

**Annual Report
2019 – 2020**



Contents

About Port Fairy Community House

Chairperson's Report

Treasurer's Report

House Coordinator's Report

Program & Services Highlights 2019-2020

Organisational Chart 2020

Strategic goals 2020-2024

Financial Reports

Acknowledgements

About Port Fairy Community House

The Port Fairy Community House (PFCH) is in its 30th year of operation. The House receives funding from the Department of Health and Human Services (DHHS) and applies for various grants as available. Additional funding is raised by the Community Market, in-house courses and venue hire. A voluntary Committee of Management sets the strategic direction of the PFCH and is accountable for its operations. A team of part-time employees is responsible for program development and implementation.

Mission

Our mission is to provide inclusive social, cultural, environmental and educational experiences for our community.

The Neighbourhood House Community Development model

In order to meet our local community needs and Organisational goals we aim to:

1. Involve the community and encourage participation and inclusion, valuing diversity and difference at all levels of Neighbourhood House operation.
2. Identify community needs and aspirations.
3. Determine appropriate programs, activities and services in response to community needs, ensuring that diversity and difference are valued.
4. Partner with community organisations, businesses, government and philanthropic organisations to secure appropriate funding and support.
5. Deliver quality programs, activities and services.
6. Evaluate the effectiveness of all aspects of Neighbourhood House operations, including programs, practice and governance.

Committee of Management

Chairperson Pam Grendon

Deputy Chair Adi Tayler

Treasurer Adi Tayler

Secretary Mary Kerr

Ordinary Members

Carole Howlett

Anna Holter

Morgan McAlinden

Staff Members

House & Market Coordinator Pam McGoldrick

Finance & Admin Support Officer Jo Campbell

Community Engagement Coordinator Fiona Hampson

House Maintenance Rachel Tolliday

Volunteers

Adi Tayler Jeanette Robertson (Retired)

Valerie McIlwain June Crawley (Retired)

Keitha Smith Jo Levey

Jan O'Neill Dennis Kavanagh

Annie Davies John Miller

Lucy Marshall Natasha Mills



Chairperson's Report

The year 2020 will certainly go down in our memories as being a difficult year. We started positively with anticipation of new activities and community input. Unfortunately, the COVID Virus hit and has resulted in PFCH, and indeed all Australians, working in unprecedented times.

PFCH was in a very positive financial status at the start of the slowdown of activities due to the virus and has continued to stay in a good position throughout the year even without the income usually generated from courses, venue hire, markets etc. Our positive status has been aided with the help of government subsidies and good management by our Manager, Pam McGoldrick, who has kept herself informed of any available funds available to the House. There has been close communication with Neighbourhood House Victoria and the Department of Health and Human Services throughout the pandemic. This has resulted in extra accountability on behalf of PFCH with increased reporting and accountability for funds. Whilst the House has been closed for much of the time, the food donation box for needy families has continued, masks have been sewn by our volunteers and updates on the pandemic have been published on social media. Our loyal staff have continued working from home preparing for the time we are able to open again and are set to deal with changes in circumstances as they take place. The Committee of Management (COM) has continued to meet on a monthly basis via Zoom and continually monitor the changing situation.

The COM places a large importance on the future of the House. To this end, a Strategic Planning day was held early in the year, facilitated by the CEO of Neighbourhood House Victoria, Nicole Battle. Our existing plan was critically analysed and a revised strategic plan has been consolidated with a focus on community engagement, leadership and culture, quality and risk management. The plan will be monitored monthly through the COM meetings once things return to a normal routine.

You will have noticed major changes to the external appearance of the House. In the past, the entrance was obscured by large shrubs and trees resulting in many people being unaware that the House was there and of services we provide. Utilising money from the Victorian Business Support Grant has enabled a facelift for the House with the front garden being totally changed to enhance vision of the House by the community and provide a welcoming space with seating in a garden environment. This is a work in progress.

We look forward to a future with the ability to conduct all our courses and to continue holding the popular Saturday markets. A big thank you for the continued input from our volunteers and the community, the House would not be able to operate without you. In true Port Fairy tradition, our valued volunteers work tirelessly to assist in the provision of services to the community.

A big thank you to my co-workers who give so freely of their time to the COM and a big welcome to our new committee member, Anna Holter.

The COM values the close working relationship we have with the staff and in particular the House Coordinator, Pam McGoldrick. She is supported by Jo Campbell, Support/Financial officer, and newcomer Fiona Hampson to the position of Community Engagement. This position was vacated due to the resignation of Carol Campbell, who has left the district. Thank you to all of you for your input especially given the erratic times of 2020.

The COM recognises the devastating effects on the community by the Pandemic but remains optimistic for a more normal 2021 where we can undertake our programs, businesses can prosper, social interaction can be done freely and we can all enjoy the bounties our beautiful town has to offer.

Pam Grendon, Chairperson

Treasurer's Report

This financial year has been a vastly different and challenging year from all previous years, with complex and unexpected impacts on all our lives and the functioning of Port Fairy Community House (PFCH). Despite these unprecedented times, PFCH has weathered well and as you will see when perusing the financial reports, has finished the year in a solid financial position.

The beginning of the year, until March 2020, progressed strongly, and the consolidation of banking processes has streamlined our reporting processes. In addition to our funding from DHHS, we have successfully received several grants and our final profit figures reflect the durable financial position and growth of PFCH.

From March 2020, when business was curtailed and protocols for operation seesawed and changed radically, income ceased in most areas, however supporting grants, government payments and tax concessions, and with intelligent management, the impact was cushioned allowing PFCH to continue reduced operation and remain in the black.

The budgets for 2020 – 2021 have been formulated to reflect the changes and unprecedented unknowns, and the future looks positive. As life changes and progresses, the solid financial position of PFCH allows for optimism and hopefully solid growth.

Adi Tayler, Treasurer



House Coordinator's Report

This year has been like no other experienced at Port Fairy Community House. We had an amazingly busy first half of the financial year, celebrating our 30th birthday and then launched into 2020 with many first offerings and excitement on what we were about to achieve for the remainder of the year. Unfortunately, we were physically closed due to COVID-19 from March 18th to June 9th, which set new challenges for our staff to maintain contact with our local community during these uncertain times. I am immensely proud of the commitment of our staff and Committee of Management who have and contributed to our successful year despite Covid-19.

In January Carol Campbell resigned from Community House due to relocating residency. We were very fortunate to have Carol as part of our team for over 3 years and were sorry to lose her enthusiasm and ability to get things done. We wish her well with all the future holds. In February we were delighted to have local Fiona Hampson join our team as the new Community Engagement Coordinator and although she has had limited physical time at the House due to the closure, she has certainly made a positive impact.

The Women's Weekend held in August 2019 was another very successful event, with 48 participants coming together over a weekend to explore, challenge and enjoy themselves. With the numbers enrolled in this weekend increasing each year and the feedback continuing to tell us how much this weekend is enjoyed, we look forward to offering this again each August. We thank all our sponsors for supporting us with this event as we operated this event without ACFE funding support that we have received in previous years.



Our Community markets have operated successfully again this year up until the mid-March closure. Our January markets were super busy and we had a record number of stallholders across the 5 markets. We operated our first Folk Festival markets over 2 days during the festival with fantastic support from our regular market stallholders. Our markets continue to focus on offering a large variety of local products to the community and tourists to our town.

In February we launched the Port Fairy Repair Café which is part of a worldwide organisation. At the Repair Café, our generous volunteer Fixers encourage people to repair rather than replace items. It is planned to run the Repair Cafe on a monthly basis and we acknowledge the wonderful Natasha Mills who coordinates the Repair Café. We also ran our first Children's Clothing Exchange organised by Lucy Marshall resulting in many items of clothing finding a new home.

Our Community Gardeners have tended to our lovely garden each week, sharing their knowledge, while developing and maintaining this community resource. The Grow Cart has been utilised throughout the year with members of the community dropping off excess home grown produce and others taking the fresh produce to ensure nothing goes to waste. With a successful grant late this year, we will be moving the Grow Cart to a more prominent position at the House and adding a shelter from the weather.

Our Auspice Groups have increased by 1 with the addition of the Waste Action Management group and continue to offer a selection of activities for their respective members. An update on their achievements for the year can be found later in this report.

Our variety of room spaces available for hire has attracted an increased number of venue hire hours, giving community and business groups a comfortable space to run their sessions while contributing financially to the Community House.

The strong financial result for this year was achieved despite the loss of much of our income for 3 months. We successfully applied for supporting government grants and JobKeeper during the shutdown which has enabled the House to maintain a strong financial result, however we were fortunate to enter this challenging time with good financial management and a solid financial position.

Our Committee of Management has once again volunteered their time and expertise to lead the Community House through a challenging year with many unknowns. Without this dedicated group of community minded individuals, our Community House would not exist and, on behalf of the staff, I thank them for their continued support.

As a not-for-profit community based group, we could not offer our services to the community without the ongoing support of our volunteers. We have a fantastic group of volunteers who assist us in many areas of the House – from answering the phone at reception to running a course or erecting a marquee. I thank everyone who has given up their time to assist us and acknowledge the important role our volunteers play. We had two long term volunteers retire this year – Jeanette Robertson & June Crawley – who contributed greatly to the running of the House. We thank them and miss having them around.

Many times visitors to Community House commented on the energy and activity levels which we have gratefully taken on board as feedback that we are heading in the right direction with our community offerings. The year ahead is always exciting and despite the challenges we may yet face, we continue to strive to achieve our best for all the programs, members and groups associated with Port Fairy Community House.

Pam McGoldrick
House Coordinator

We provided one location where all the local information, relevant to the current, ever changing situation, could easily be found by sharing information and advice that was pertinent to our local community and from significant government and health authorities.

We also connected with and supported local businesses by keeping everyone updated with their new offers and operating times. We quickly had over 700 followers.



Grown by the community, for the community



Take what you need, Give what you can!

*This is a perpetual sharing cart for home
produce, preserves and the like, provided by Grow Free.*

PROGRAM & SERVICES HIGHLIGHTS

Port Fairy Community Market

Our markets have been increasing in variety and numbers of attendees both stallholders and patrons for the financial year – right up until the COVID-19 closure in March 2020. Our markets aim to showcase produce and handmade items from around our local region, while providing a vital source of income, contributing to the financial viability of the Community House.



A total of 30 markets were planned to be held over the 2019- 20 financial year at Railway Place however the markets were closed due to COVID-19 from March 17th and we were only able to run 24 markets for this year. This included three additional regular markets from our 2nd and 4th Saturdays.

A total of 1370 stallholders attended the markets throughout the year which has given us strong financial results for the markets. We continue to have strong interest from new stallholders to join our markets, and after consideration of our selection criteria, 46 new stallholders were approved to trade at the markets, bringing a fresh array of locally made and grown produce.

Our markets continue to support many groups in our local community with the involvement throughout the year from Belfast Lions Club, Rotary, Red Cross, CFA, U3A, Port Fairy Consolidated School, Port Fairy Surf Lifesaving Club, Very Special Kids, Port Fairy Citizen's Band, Cancer Council, Mosswood Wildlife Fundraiser, Bailey's Scrunchies for Cancer and Port Fairy Tennis Club, St Brigid's Crossley.

The "Sit & Relax" area at the market is ever popular as a place to sit and chat or enjoy a coffee and some delicious market food, and we thank our wonderful market volunteers who turn up early each market to set up and then return pack this area up.



Port Fairy hosted its 2nd Vintage Weekend in September, and the market was part of this weekend with vintage goods on offer and free valuations of collectibles/antiques held at Community House. In conjunction with our markets, our annual car boot sale was held in November although the weather was not kind which reduced our numbers attending. Our January Holiday markets were once again very

successful with strong attendance at five markets and perfect weather for market days. Our first market in February was held in conjunction with the Jazz weekend and we enjoyed music from the Port Fairy Citizen Band while our market was in progress.

We took over the running of the Folk Festival markets at Railway Place in 2020 which was an exciting opportunity for our markets to be part of this busy weekend in Port Fairy. We operated a market on both the Saturday and Sunday of the Folk Festival weekend in March with wonderful support from our regular stallholders and most reported an excellent weekend of sales. These Folk Festival markets were successful for Community House with the additional income becoming very important in light of the closure of the markets for the remainder of the financial year. Our Annual Easter Fair in conjunction with the Belfast Lions Club was not able to proceed this year but we look forward to running it again in 2021.



While closed under COVID-19 restrictions, our market went online for Mother's day with over 30 stallholders taking part. Throughout the closure we have been actively promoting our regular stallholders through our market Facebook page with an aim to supporting them through a difficult time. We look forward to running many successful markets next year abiding by any restrictions imposed by COVID-19.

Pam McGoldrick

Market Coordinator



Community Education

Classes and workshops

This financial year, Community House has offered over 100 classes and activities including the annual Port Fairy Women's Weekend. We totalled 562 enrolments for the year. In the past twelve months the Community House has continued to increase its online presence, and all workshops, classes, groups and activities are promoted on social media. Some of our new groups and classes included the Port Fairy Hookers, Pulled Painting, Wreath Making and a Children's Community Choir.

School Holiday Program

In July we ran a very successful program of 12 fully booked & free kid's activity sessions. We were able to offer these sessions free of charge thanks to our successful FRRR grant. In the September holidays we had another 4 well supported sessions of holiday program. Unfortunately, due to the Covid-19 closure, we had to cancel our Easter program this year.



PORT FAIRY WOMEN'S WEEKEND 24 & 25 August 2019

A weekend of wellbeing for women to
ignite & inspire their true self.
Are you ready to give yourself the gift
of a weekend just for you?



For more information and bookings, contact the Port Fairy
Community House on 5568 2681.

WWW.PORTFAIRYCOMMUNITYHOUSE.COM.AU

Women's Weekend 2019

The 2019 Women's Weekend was another successful event with a total of 48 paying participants. This is an increase of about 8% on last year's numbers. Presenters were a mix of local and from further afield and the workshops covered hands on craft, art and personal reflection. The dinner was held at Limestone Gallery where we were bursting at the seams with approximately 70 in attendance. Margaret Whitehead was an inspirational speaker talking about her volunteering life. We were reasonably well resourced with volunteers and the whole weekend ran smoothly.

The debrief with the advisory group highlighted how well things ran but also the need to start looking into better technology to assist with the bookings and preferences of different people. Thanks to the Port Fairy & District Community Bank, St John of God and the Moyne Shire for grant

funding to assist with this event. Thanks also to Carol Campbell and her advisory group for making this event a great success.

Social Responsibility

We have continued to promote social responsibility through many of our groups and activities including our Cloth Nappy Library, sewing bee for animal rescue items after the fires, the collection of bread tags and plastic lids for the Aussie Bread Tags for Wheelchairs program, the collection of women's sanitary products for Share the Dignity, and the collection and distribution of food items in conjunction with Warrnambool & District Food Share and our Grow Cart.



After COVID-19 hit, we also increased our work with Warrnambool and District Foodshare with weekly trips to Warrnambool for donation drop offs and food supply collections to distribute to Port Fairy residents in need. We also organised for a Foodshare bin to be located out the front of Port Fairy Community House and increased donations from locals through Facebook posts and our newsletter.

Children's Clothing Swap

In February we ran our first children's clothing swap. It provided a great opportunity for locals to exchange quality children's clothing with others and recycle items that had been outgrown. Bags of items were donated which was sorted by Lucy, staff and volunteers and a stream of people on the day coming to choose new items with their tokens. Thanks to Lucy Marshall for running this event.



Coronavirus Facebook Group

In March, when we had to temporarily close our doors, we launched our "Port Fairy Coronavirus Info & Assistance" Facebook group. It was a way for the Community House to stay engaged with and support our community, in light of the current circumstances. We wanted to be the catalyst for connecting locals to help each other during this time, whilst following all the recommended safety measures. We provided one location where all the local information, relevant to the current, ever changing situation, could easily be found by sharing information and advice that was pertinent to our local community and from significant government and health authorities. We also connected with and supported local businesses by keeping everyone updated with their new offers and operating times. We quickly had over 700 followers.

Grow Free Cart

The Grow Free Cart has been very busy, particularly during the lockdown and when some staples such as toilet paper, rice flour and pasta began to be difficult to buy we were able to use the cart for donations of such items to people who had run out. We were successful with our grant application to South West Community Foundation to build a new shelter for the Grow Free cart which will help increase its visibility and size.



Repair Café

In February we also launched our first Repair Café. It was a hugely successful day! More than 50 items were fixed, and we had lots of happy locals. Items brought in included knives, lawn movers, jewellery, bikes, computers and more. Such a wonderful vibe and fantastic community spirit. A huge thank you to Natasha Mills for running the event and all our fabulous fixers and volunteers.

Finally, thanks to all our wonderful tutors, volunteers and group leaders for their time, their expertise, their generous enthusiasm and (due to Covid-19) their patience and understanding.

Fiona Hampson

Community Engagement Coordinator



Auspice & Activity Groups

Port Fairy Community Group has a strong focus on supporting local community groups to pursue their areas of interest, share their expertise and provide learning and social activities for the residents of Port Fairy and surrounding district. Auspice groups come under the umbrella of the Community House. Their members are financial members of PFCH which then covers the group for insurance and assists with risk management and grant applications without the need of that group to incorporate. Auspice groups deliver a wide variety of activities throughout the year. In the last twelve months these have included:

WATER AEROBICS

Thanks to the **Port Fairy Community House** for their ongoing support of **Water Aerobics @ Belfast Aquatics Indoor Heated Pool Port Fairy** with Instructor Martina.

Unfortunately Covid-19 restrictions have limited the ability for Water Aerobics to gather during 2020; Water Aerobics has been unable to meet 23 March-22 June 2020 (inclusive) & 6 August 2020 – currently still closed (as at today's date 11 October 2020). Other than the times mentioned above attendance was extremely consistent with an average in the winter of 12 - 20 and increased



numbers when the weather is more pleasant and we can have up to 30 participants and more on Thursday morning!

I have about 55 fairly regular participants on the books with the occasional visitor or friend or relation joining us, the more the merrier I say!

Looking forward to getting back to Classes at Belfast Aquatics once Covid-19 restrictions allow – why don't you come and join in a class such as Water Aerobics or Deep Water running. Water allows *everyone* to be able to exercise no matter what size, age or fitness level and it's especially gentle on any injury or ailment. Come along and join us, the benefits are yours to experience.

We all come along for various reasons; sometimes the exercise is a bonus – chatting is certainly encouraged and engaged in with fervour!

A highlight continued to be our weekly social gatherings @ Rebecca's for coffee after Thursday morning Aerobics, prior to Covid limitations of course!

We like any excuse to go out for lunch or an evening meal especially birthdays. The strength of friendships begun and forged because of attendance @ Water Aerobics is wonderful to witness. You will find us very inclusive, friendly and welcoming - in fact it is a very good way to meet people.

Once again, a huge thanks to the **Port Fairy Community House** for your ongoing support.

Martina Murrihy Contact: 0429195508 or email martina.murrihy13@gmail.com

UKULELE GROUP

Like every other group this last 12 months, we have been disrupted by events but the Uke Group was very active in the months September to March, with our regular Thursday night sessions at the Community House and our regular playouts at Belfast House and Mercy Aged Care Warrnambool. We also played at Senior Citizens and were offered house band status, but we just didn't have the time!

Christmas was very busy with far too many Christmas carols sang during the festive season, this followed on into January playing on the Village Green for the Moyneyana Festival. We also had three, 'come and play' sessions on the Village Green where anyone who wanted to play came along with their musical instruments. These nights were very well attended both from players and audience. We hope to make this a regular event in January in the future.

Of course all this activity came to a halt towards the end of March. We did continue on using Zoom from March through to mid-June. I was really pleased how many people, after a bit of tuition, connected to Zoom.

We resumed our Thursday nights at the Community House 18th June but by 23rd July COVID ceased our sessions. We are trying to start up again from the 5th Nov and see how it goes, some people are waiting until better times.

On behalf of the Port Fairy Ukers we would like to thank the Community House for your ongoing support.

Tony Bishop - Coordinator

New members are welcome. Contact:

Tony 0400 214 503 or

Judy 0400 543 936



BEACHCOMBING GROUP

Like many of the activities this year, the Port Fairy Beachcombers have had an interrupted program, but with luck we are past the worst and back on the beach in full swing. Despite the interruptions, our group has expanded this year and we now have eight regulars on our Thursday morning walk.

It looks like a jellyfish and acts like a jellyfish, but it is actually another type of animal called a Hydrozoan. Hydrozoans have two distinct life stages – one where they swim around like a jellyfish and another stage where they attach to a seaweed and form a colony of little polyps a bit like a ferny coral. Who would have thought that these were the same animals?



Red jelly swimming phase



Ferny colony phase



Each little spine is a polyp

You just never know what will turn up on our beaches, which is exactly why you should join us on South Beach on Thursday mornings at 8 am right through the year.

John Miller – Group Leader

TAI CHI

Despite the Covid restriction, the Tai chi group has had a good year with everyone keen to come back to the class during the brief interlude of lesser restrictions!! I think this gives a good idea how the members really enjoy their weekly Tai chi, not only for the physical benefits, of keeping us mobile and well balanced and generally healthy, but also for camaraderie which exists in the group.

Our numbers fluctuate, as it is a group which people come and go, but we have also had new members, and on an average we would have 14- 18 attendees each week. My thanks go to the Port Fairy Community House which Auspice this group. Also thanks to Jackie Favelle who takes the group when I am not available. We are looking forward to meeting again, as soon as the restrictions lift, so that we can continue to enjoy the healthy benefits of Tai Chi.

Netta Hill - Tai chi Group Leader.

HEART FOUNDATION WALKING GROUP



“How time flies when you are having fun, well that’s how it seems and the walking group try to have plenty of fun!”

This was how the report from last year commenced, what a different story in 2020, given the Covid restrictions, social distancing, masks and gathering restrictions

The Friday Morning walking group has maintained a good level of membership at least in the first half of the year. There are 38 registered members (10 male and 28 female) and despite winter escapes to warmer climes and overseas, we are averaging 14 walkers attending each week in Winter and Summer.

Members are of varying ages and fitness levels and on the weekly walks, we cater for all levels of ability. Each of eight selected walking routes features a long track and a short one (with appropriate detours). The distance covered is between 4 and 6 kilometres and the time taken is around one hour and some minutes.

Our meeting point was outside Driftwood Coffee Shop, we gather at 9-30 am each Friday. The first few minutes are spent in warm up and stretching exercises that are lead by experts in the field and these take place outside Community House, in Railway Place.

The group not only enjoys the exercise but a social get-together, coffee and a good old chat after each walk. We meet for dinner and an event at least once a year.

Significant awards were achieved by several members this year with 200, 100 and 50 walks being recognised by The Australian Heart Foundation. Congratulations to all recipients and also to those members who reached significant life milestones.

Apart from the Port Fairy Community House membership fee of \$10, there is no other associated cost when joining the Heart Foundation Walking Group.

Registered walkers who consent, receive regular communications from The Australian Heart Foundation and an occasional local newsletter.

The Heart Foundation also awards certificates and offers cash vouchers for milestone achievements for those who have registered for these options.

Walking Group membership is open to all and the group welcomes new members at any time during the twelve months. We aim to walk every Friday during the year.

(Because of restrictions on some routes, sorry, but dogs are not permitted).

Morgan McAlinden
Group Organiser

TEXTILE ARTS

Our textiles group meets every 1st and 3rd Friday of each month at the Port Fairy Community House. The group was formed 11 years ago, as a gathering of people who share a passion and great interest for creating various forms of artwork that use many different mediums related to textiles. Techniques used include felting, spinning, weaving, hand and machine embroidery and embellishing, knitting, crocheting, screen printing, eco-dyeing, working with wire, wood working, creative paperwork and book making, quilting and painting.

The purpose of our group is to meet and share ideas and learn from each other. However, with the advent of Covid-19 and the closure of the Port Fairy Community House, together with the restrictions imposed by the DHHS Victoria, we have been unable to meet since March 2020. This presented a new challenge of how to remain in touch and continue to be creatively inspired. Emails, phone calls and the occasional catch-up at a safe distance saw us keeping in contact and led to the group answering the call to help make scrubs, gowns, caps and scrubs bags for hospitals in need, both in Melbourne and the South West, including our hospital and clinic here in Port Fairy. The members have been only too happy to donate the materials and their time to contribute to this cause.



PROJECTS FOR 2020

- Year project: **BOTANNICAL**
- Mini projects about every 2nd month:
- Fish
- Bicycle
- Covid-19 Lockdown Friendship Mural

DISPLAY 2020

We display our work at the Port Fairy Lions Club Art Show held in December each year but unfortunately this will not be happening this year.

U3A PORT FAIRY

The University of the Third Age (U3A) is an international organization embodying the principles of lifelong learning and social interaction for seniors who are retired or semi-retired. Through participation in U3A courses and activities the health and well-being of seniors within the community is enhanced.

The U3A movement offers a low-cost model of active, positive ageing.

The first year of U3A Port Fairy offering courses and activities has been very successful. In June 2019 for Semester 2 we offered 13 Courses and had a membership of 140.

Courses included:

- Current Affairs
- Essays and Ideas
- Great Trials of the Western World
- History of Port Fairy
- Mahjong
- Passion for Poetry
- Science –Naturally
- 1st Tuesday Book Club
- Stories of Us: Great Australian Literature
- Wandering the World: Travels from near and far
- Regional Gallery Visits

In August Dr Heather Sheard was a guest speaker sharing her research on Australian Women Doctors in the Great War.



U3A Enrolment & Information Day at PFCH, Feb 2020

In October 2019, with the assistance of Moyne Shire Council, we held a special event – a morning tea and talk presented by Dr John Sherwood on “The Mahogany Ship” at the Reardon Theatre to engage and involve seniors throughout Moyne Shire. Over 200 people attended from all over Moyne Shire.

We celebrated our first year of operations with an end of year celebration at Limestone Gallery. With a successful year behind us, we started 2020 with a full program of over 20 courses and additional planned activities and a membership of 160.



Dr John Sherwood at the Reardon Theatre



Dr Heather Sheard discusses Women in WWI

We held our inaugural Annual General Meeting on 25 February 2020 and the committee of management was elected:

Kate Donelan, President; Maggie Currie, Vice-President; Maureen Joyce, Secretary; Carole Howlett, Treasurer and Committee Members: Sue Goy, Jill Burgoyne, Mary Kerr, Sue Knudsen and Richard Walter (subsequently resigned).



Unfortunately the Covid-19 health crisis and restrictions meant that by mid March 2020 we suspended all courses and activities.



At Community Market Nov. 2019

The U3A PF Committee of Management met regularly to discuss the restrictions and the expert health advice and to consider strategies to continue to engage our membership whilst our face-to-face classes were suspended. We met with course leaders and discussed options for using Zoom for meetings and activities; only one course, Western Philosophy, was offered by Zoom; other course leaders preferred to wait until normal classes could resume.

From March until the end of this year, we improved communication with members through emails from course leaders and an improved and expanded monthly rather than bi-monthly newsletter. The U3A Port Fairy Newsletter contains updates from course leaders as well as information from members and links to articles, recommended websites and quizzes to engage members.

By mid semester it was likely that classes would need to remain suspended. The Committee of Management began to look at ways to adapt its operations and to plan for some activities using Zoom technology and small group classes in outside settings, where possible.

Kate Donelan
President



U3A PF Members and Friends celebrating at Limestone Gallery, Dec 2019

PORT FAIRY COMMUNITY HOUSE GARDEN GROUP

The Garden Group continues to be well supported with a membership of seventy. We meet fortnightly during school term time for a garden visit followed by a shared morning tea and chat.

At present we are in recess due to COVID 19 and intend to resume once restrictions allow. We have kept in touch with a monthly email newsletter with garden photos and anecdotes from members.

We continue to maintain the Railway Place Gardens with the help of the Moyne Shire Council and receive many compliments from visitors and residents. The garden is maturing nicely.

Thank you to our enthusiastic members for their continued support and to the generous garden owners who share their gardens with us. Thank you to the Community House for their continued support and advice.



Jane Ryan



WOMEN ON FARMS



Our theme is "Women for all seasons". Over the past year we have been strengthening the cohesion of the committee and expanding our contacts to develop an impressive cohort of speakers, workshop presenters and tour leaders. The aim as we prepare the gathering is 'to inspire women in agriculture to grasp the opportunities for advancement of the industry and themselves'.

For over thirty years these annual gatherings, scattered across regional Victoria, have focused on the needs and interests of farming women and women in related fields. The 2016 ABARE report tells us that there are 6000 women who are decision makers in agriculture in the Warrnambool district. In the current situation, regarding COVID-19, with the resultant isolation and uncertainty, we are aware of the need for emotional support of each other

as we cope with restrictions and the necessary 'lock downs'. We have been forced to suspend our monthly face to face meetings but we have replaced that with a new skill, the Zoom meeting. Women in general are very environmentally conscious we will be harnessing this with a series of guest speakers, workshops and tours. This will also further skills in the technical and business aspects of farming. A demonstration of sustainability and environmental responsibility will be staged six months before the gathering. This September we will ceremonially bury a woollen jumper and a synthetic jumper. Then retrieve them at the gathering to show, hopefully, the decomposition (returning to nature) of the woollen jumper compared with the synthetic one. A nod will be given to our history in attention paid to our local indigenous sites and culture and to the strong Irish history of the district.

We have been in constant contact with the women in Inglewood who were the hosts of the 2020 WOFG. This of course, did not happen as scheduled in March 2020, after several date changes they have finally made the decision to hold their Gathering in November 2021. They have our sympathetic understanding and gratitude for their cooperation with us.

The Moyne Shire Council has been generous in their support. Among that support is a series of scholarships available to women who live within the Moyne Shire to attend the Gathering. It is terrific to be able to work with and be warmly supported by PF Community House, Moyne, TAFE, Rural Women's Network, local industries, businesses and Governments, to prepare our Gathering. Everyone we work with, like us the committee, are optimistic that when March 2021 comes, the corona virus will have been controlled to the point where we can have a normal and safe event. But we all understand this may not be the case, so other arrangements may be made.

Lorraine Ermacora, Chair. Women on Farms Gathering Port Fairy 2021



WOFG and friend. Julia O'Neill, Val Lang, friend, Barbara Eldridge and Lorraine Ermacora at the 2019 WOFG Warrigul. Absent is Sue Rowbottom who was parking the car.

COMMUNITY GARDEN

Our year in the garden started off with a huge clean up around the back of the house and the garden shed and we say thank you to Jim McIlwain for all his help. Like all other activities at the Community House, we stopped meeting at the garden due to Covid. Since then, interest has waned – it's not much fun gardening with masks on and there hasn't been too much happening.

We are very short on volunteers at the moment and are in desperate need of new gardeners to help re-invigorate the garden. Whether it be on a regular weekly basis, or just on occasion, everyone is most welcome to join us on Monday mornings at 10am to share gardening tips and enjoy outdoor activity, followed by a cuppa. If you are interested in joining in, please call in to the Community House and talk to us.



PORT FAIRY WASTE ACTION MOVEMENT



The Port Fairy Waste Action Movement began in October 2019 and became an Auspice Group of the PFCH in March 2020. With an objective to "Empower the Port Fairy Community to Minimise Waste", the group set a list of priorities, including developing a website and Facebook page, reducing the number of single use coffee cups in Port Fairy and developing a comprehensive booklet for recycling everyday goods to assist Port Fairy and Koroit communities. In March Covid 19 put a halt to our meetings and activities. Our group hopes to resume in November 2020 and reset priorities for a Covid normal world.

PORT FAIRY BELFAST BOOKERS

CAE book groups were founded in 1947. Belfast Bookers is a CAE Book Group started in 2005 for people from this area who have a love of reading and were interested in discussion of novels as an adult group. The group normally meets 11 times a year at 7.30 pm on the second Tuesday of the month at the Community House. In 2019 we had 9 members and commenced 2020 with a small group 7 members.

Our books are selected in November from the CAE catalogue and are normally dispatched each month from the CAE warehouse in Melbourne. Included with the books is a set of discussion notes and questions to use as a base for discussion. We enjoy sharing different perspectives on our reading and the discussion and links to other topics that arise. We usually discuss our latest reading along with films, current and community information.

Since 2020 commenced we have only been able to hold two meetings and in March we decided to choose some books from our private collections which would be on rotation to other members in the group – with seven members this would last us 7 months. We have not met in person or by Zoom, sending comments by email or phone calls. We are now looking at some Zoom meetings in the future.

From July 2019 we have read:

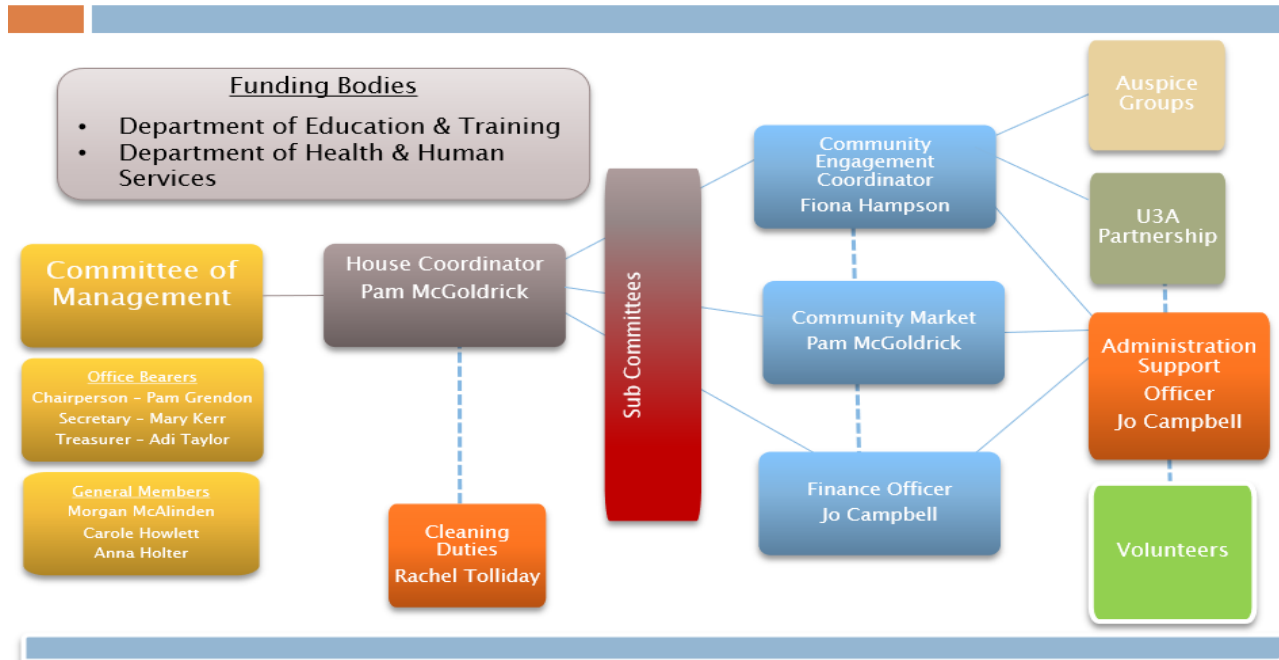
- ***Waging Peace***, Anne Deveson
- ***Return to the Little Coffee Shop of Kabul***, Deborah Rodriguez
- ***Oranges are not the Only Fruit***, Jeanette Winterson
- ***Coda***, Thea Astley
- ***The Goldfinch***, Donna Tartt
- ***Thousand Autumns of Jacob De Zoet***, David Mitchell
- ***City of Friends***, Joanna Trollope
- ***Getting Equal***, Marilyn Lake

The cost to members includes a charge for the supply of books from CAE which is covered in an enrolment fee ranging from \$85 - \$149 depending on personal circumstances, plus the \$10 membership of Community House.

We had a successful and enjoyable 2019 and look forward to when this small group may meet again in person.

Group Secretary: Maureen Joyce
Phone contact: 556 85260 or 0418210011
Email: mojoyce1@gmail.com.au

PFCH Organisational Chart – 2020



STRATEGIC REVIEW

2020-2024

PFCH STRATEGIC PLAN 2020 - 2024

Our Vision

To provide inclusive social, cultural and educational experience for our community

We measure our effectiveness using the following domains:



FINANCIAL REPORTS

**PORT FAIRY COMMUNITY GROUP INC.
A.B.N. 84 487 973 686
FINANCIAL STATEMENTS
FOR THE YEAR ENDED 30 JUNE 2020**

Contents	Page
Statement of Comprehensive Income	2
Balance Sheet	3
Statement of Changes in Equity	4
Statement of Cash Flows	5
Notes to the Financial Statements	6-11
Statement by Members of the Committee	12
Audit Report	13-14

PORT FAIRY COMMUNITY GROUP INC.
A.B.N. 84 487 973 686
STATEMENT OF COMPREHENSIVE INCOME
FOR THE YEAR ENDED 30 JUNE 2020

	Note	2020 \$	2019 \$
INCOME			
Revenue	13	218,066	235,768
		<u>218,066</u>	<u>235,768</u>
EXPENDITURE			
Depreciation	13	950	1,706
Employee benefits expense	13	121,139	157,804
Other expenses	13	34,820	51,186
		<u>156,909</u>	<u>210,696</u>
Result for the year		<u>61,157</u>	<u>25,072</u>
Total Comprehensive income for the year		<u>61,157</u>	<u>25,072</u>

The accompanying notes forms part of the financial statements

PORT FAIRY COMMUNITY GROUP INC.

A.B.N. 84 487 973 686

BALANCE SHEET
AS AT 30 JUNE 2020

	Note	2020 \$	2019 \$
ASSETS			
CURRENT ASSETS			
Cash and Cash Equivalents	2	184,095	133,838
Trade and other receivables	3	8,972	657
Shares		500	500
TOTAL CURRENT ASSETS		193,567	137,995
NON-CURRENT ASSETS			
Property, plant & equipment	4	5,274	3,145
TOTAL NON-CURRENT ASSETS		5,274	3,145
TOTAL ASSETS		198,841	138,140
LIABILITIES			
CURRENT LIABILITIES			
Trade and Other Payables	5	14,338	9,698
Short Term Employee Provisions	6	29,998	24,949
TOTAL CURRENT LIABILITIES		44,336	34,647
Non-Current Liabilities			
Long Term Employee Provisions	6	7	10,152
TOTAL NON-CURRENT LIABILITIES		7	10,152
TOTAL LIABILITIES		44,343	44,799
NET ASSETS		154,498	93,341
MEMBERS FUNDS			
Retained surplus		154,498	93,341
TOTAL MEMBERS FUNDS		154,498	93,341

The accompanying notes form part of the financial statements

PORT FAIRY COMMUNITY GROUP INC.**A.B.N. 84 487 973 686****STATEMENT OF CHANGES IN EQUITY
FOR THE YEAR ENDED 30 JUNE 2020**

	Retained Earnings \$	TOTAL \$
Balance at 30 June 2018	68,269	68,269
Comprehensive Result	<u>25,072</u>	<u>25,072</u>
Balance at 30 June 2019	93,341	93,341
Comprehensive Result	<u>61,157</u>	<u>61,157</u>
Balance at 30 June 2020	<u>154,498</u>	<u>154,498</u>

The accompanying notes form part of the financial statements

PORT FAIRY COMMUNITY GROUP INC.
A.B.N. 84 487 973 686
STATEMENT OF CASH FLOWS
FOR THE YEAR ENDED 30 JUNE 2020

	Note	2020 \$	2019 \$
Cash Flow From Operating Activities			
Receipts from operating activities		208,989	236,694
Interest received		762	1,203
Payments to suppliers and employees		(156,415)	(202,240)
Net cash provided by/(used in) operating activities	12	53,336	35,657
Cash Flow From Investing Activities			
Payments for Property, Plant and Equipment		(3,079)	-
Net cash (used in) investing activities		(3,079)	-
Net increase/(decrease) in cash held		50,257	35,657
Cash at the beginning of the year		133,838	98,181
Cash at the end of the year	2	184,095	133,838

The accompanying notes form part of the financial statements

PORT FAIRY COMMUNITY GROUP INC.
A.B.N. 84 487 973 686
NOTES TO THE FINANCIAL STATEMENTS
FOR THE YEAR ENDED 30 JUNE 2020

Note 1. Summary of Significant Accounting Policies

The financial statements are special purpose financial statements prepared in order to satisfy the financial reporting requirements of the Associations Incorporation Act 2012 (Vic). The Committee has determined that the Association is not a reporting entity.

The financial statements have been prepared on an accruals basis and is based on historic costs and does not take into account changing money values or, except where specifically stated, current valuations of non-current assets.

The following significant accounting policies, which are consistent with the previous period unless otherwise stated, have been adopted in the preparation of these financial statements.

(a) Income Tax

The Association is exempt from income tax under Section 50-10 of the Income Tax Assessment Act.

(b) Property, Plant and Equipment

Plant and equipment are measured on the cost basis less depreciation and impairment losses. The carrying amount of plant and equipment is reviewed annually by management to ensure it is not in excess of the recoverable amount from these assets.

Depreciation - The depreciable amount of all fixed assets is depreciated on a straight-line basis over their useful lives commencing from the time the asset is held ready for use.

(c) Impairment of Assets

At the end of each reporting period, the entity reviews the carrying value of its tangible and intangible assets to determine whether there is any indication that those assets may be impaired.

(d) Employee Benefits

Provision is made for the association's liability for employee benefits arising from services rendered by employees to the balance sheet. Employee benefits that are expected to be settled within one year have been measured at the amounts expected to be paid when the liability is settled, plus related on costs. Employee benefits payable later than one year have been measured at the present value of the estimated future cash outflows to be made for those benefits.

(e) Cash and Cash Equivalents

Cash and cash equivalents include cash on hand, deposits held at call with banks, other short term highly liquid investments with original maturities of three months or less and bank overdrafts.

(f) Superannuation

As per 'Neighbourhood Houses & Adult Community Education Centres Agreement 2018, Section 18.3; All employees covered by the agreement will receive the Superannuation Guarantee rate for all amounts earned. To avoid doubt no minimum threshold applies. (The current Superannuation Guarantee rate is 9.5% and will increase in line with the Superannuation Guarantee Act Entitlement.

PORT FAIRY COMMUNITY GROUP INC.
A.B.N. 84 487 973 686
NOTES TO THE FINANCIAL STATEMENTS
FOR THE YEAR ENDED 30 JUNE 2020

Note 1. Summary of Significant Accounting Policies (cont.)

(g) Goods and Services Tax (GST)

Revenues, expenses and assets are recognised net of the amount of GST, except where the amount of GST incurred is not recoverable from the Australian Taxation Office.

(h) Revenue

Revenue from the provision of service is recognised upon the delivery of the service to the client. Interest revenue is recognised on a proportional basis taking into account the interest rate applicable to the financial asset. All revenue is stated net of the amount of GST. Government grants are recognised as revenue when the organisation gains control of the underlying assets. Where grants are reciprocal, revenue is recognised as performance occurs under the grants. Non-reciprocal grants are recognised as revenue when the grant is received or is receivable.

	2020	2019
	\$	\$
Note 2. Cash and cash equivalents		
Cash At Bank	84,548	85,024
Bendigo Term Deposit 1	31,850	17,387
Bendigo Term Deposit 2	67,697	31,427
	<u>184,095</u>	<u>133,838</u>

Reconciliation of cash

Cash at the end of the financial year as shown in the cash flow statement is reconciled to items in the balance sheet as follows:

Cash and cash equivalents	<u>184,095</u>	<u>133,838</u>
---------------------------	----------------	----------------

Note 3. Receivables

Trade receivables	8,972	657
Provision for impairment	-	-
	<u>8,972</u>	<u>657</u>

Note 4. Property, plant and equipment

Property, plant and equipment at cost	18,118	15,039
less accumulated depreciation	<u>(12,844)</u>	<u>(11,894)</u>
	<u>5,274</u>	<u>3,145</u>

PORT FAIRY COMMUNITY GROUP INC.
A.B.N. 84 487 973 686
NOTES TO THE FINANCIAL STATEMENTS
FOR THE YEAR ENDED 30 JUNE 2020

	2020	2019
	\$	\$
Note 5. Trade and other payables		
Trade creditors	697	-
Superannuation payable	2,221	2,455
Tax payable	1,485	7,243
PAYG payable	9,935	-
	<u>14,338</u>	<u>9,698</u>
Note 6. Employee provisions		
Current		
Provision for annual leave	9,041	16,193
Provision for long service leave	20,957	8,756
	<u>29,998</u>	<u>24,949</u>
Non-current		
Provision for long service leave	7	10,152
	<u>7</u>	<u>10,152</u>
	<u>30,005</u>	<u>35,101</u>

Note 7. Events after the balance sheet date

The Board is not aware of any events which have occurred subsequent to the balance date which would materially effect the financial statement at 30 June 2020.

Note 8. Contingent liabilities

The Association is not aware of any contingent liabilities as at 30 June 2020, nor have any liens, guarantees or security been provided by the Association to third parties.

PORT FAIRY COMMUNITY GROUP INC.
A.B.N. 84 487 973 686
NOTES TO THE FINANCIAL STATEMENTS
FOR THE YEAR ENDED 30 JUNE 2020

	2020	2019
Note 9. Capital & leasing commitments	\$	\$
The Association is not aware of any capital or leasing commitments as at 30 June 2020.		
Note 10. Related party transactions		
The Association did not enter into any contracts with any member of the Board.		
Note 11. Government funding		
DEECS - Early Years Service	-	15,516
ACFE (Board)	-	4,844
DHHS	83,033	79,277
	<u>83,033</u>	<u>99,637</u>
Note 12. Cash flow information		
Operations with surplus from ordinary activities		
Net result for year	61,157	25,072
Non-cash flows in profit from ordinary activities:		
Depreciation	950	1,706
Reversal of provision for impaired receivable	-	(133)
Changes in assets & liabilities		
Increase/(decrease) in receivables	(8,315)	2,262
Increase/(decrease) in payables	4,640	(6,111)
(Increase)/decrease in employee provisions	(5,096)	12,861
	<u>53,336</u>	<u>35,657</u>

PORT FAIRY COMMUNITY GROUP INC.

A.B.N. 84 487 973 686

NOTES TO THE FINANCIAL STATEMENTS
FOR THE YEAR ENDED 30 JUNE 2020

Note 13. Detailed Income Statement for the year ended 30 June 2020

	2020	2019
	\$	\$
Income		
Adult education fees	22,457	29,518
Child care fees	893	20,361
Donations	1,391	2,397
Government funding	83,033	99,637
Grants	1,200	5,686
House hire	9,095	9,209
Interest received	763	1,203
Market stall rents	59,716	63,679
Membership	2,409	2,402
Sundry income	109	1,676
Job Keeper Payment	27,000	-
Victorian Business Support Grant	10,000	-
Total income	218,066	235,768
Expenses		
Other Expenses		
Advertising	712	1,064
Accounting & consultancy fees	2,048	5,361
Bad debts	23	-
Catering	5,070	3,631
Childcare materials	-	13
Contract labour	8,415	11,154
Cleaning	417	343
Electricity	2,636	2,407
Gardening	775	1,022
Gifts	361	426
Groceries	486	762
Insurance	668	650
Office equipment	1,145	967
Office expenses	360	577
Repairs & maintenance	841	3,186
Security	681	1,799
Subscriptions & levies	1,724	827
Sundry expenses	7,696	9,826
Telephone	2,699	3,586
Workcover	(1,937)	3,585
Total Other Expenses	34,820	51,186

PORT FAIRY COMMUNITY GROUP INC.
A.B.N. 84 487 973 686
NOTES TO THE FINANCIAL STATEMENTS
FOR THE YEAR ENDED 30 JUNE 2020

Note 13. Detailed Income Statement for the year ended 30 June 2020 (cont.)

	2020	2019
Employee Benefits Expense		
Wages	124,199	133,500
Superannuation	10,207	11,442
Leave provision movement	(5,096)	12,862
Portable Long Service Leave	1,829	-
ATO Cash Boost Stimulus	(10,000)	-
Total Employee Benefits Expense	<u>121,139</u>	<u>157,804</u>
Depreciation Expense		
Depreciation - Property, plant & equipment	950	1,706
Total Depreciation Expense	<u>950</u>	<u>1,706</u>
TOTAL EXPENSES	<u>156,909</u>	<u>159,510</u>
Current year surplus/(loss)	<u>61,157</u>	<u>25,072</u>

PORT FAIRY COMMUNITY GROUP INC.
A.B.N. 84 487 973 686
STATEMENT BY MEMBERS OF THE COMMITTEE
FOR THE YEAR ENDED 30 JUNE 2020

The Committee has determined that the Association is not a reporting entity and that this special purpose financial report should be prepared in accordance with the accounting policies prescribed in Note 1 to the financial statements.

In the opinion of the committee the financial report:

1. Presents a true and fair view of the financial position of Port Fairy Community Group Inc. as at 30 June 2020 and its performance for the year ended on that date.
2. At the date of this statement, there are reasonable grounds to believe that Port Fairy Community Group Inc. will be able to pay its debts as and when they fall due.

This Statement is made in accordance with a resolution of the Committee and is signed for and on behalf of the Committee by:

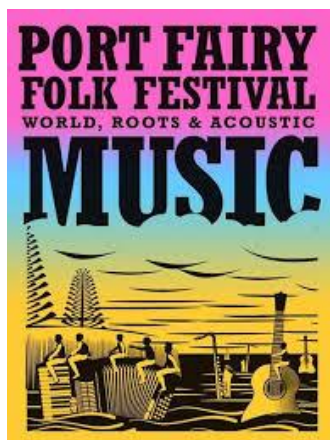


Committee Member

Dated in Port Fairy on:

5/11/2020

Sponsors and supporters



Shop 4/32a Bank St Port Fairy
03 5568 1200

Port Fairy & District
Community Bank® Branch

PortFairyMailbox@bendigoadelaide.com.au